

Services:

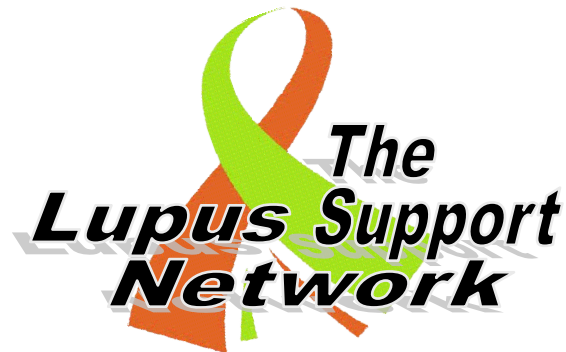
- Information
- Support Groups
- Newsletter—Bi-monthly
- Educational Programs
- E-mail list
- Assistance obtaining medications
- Assistance with physician fees
- Counseling
- Referral service
- Lending library
- Computer lending program
- Research Funding



CFC Donations:

Esca Rosa
Okaloosa
Big Bend
Alabama

*previously: NW FL Lupus Foundation For more info on how to make a donation please call our office.

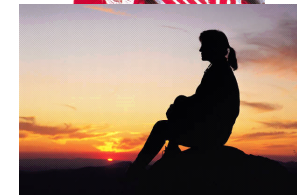
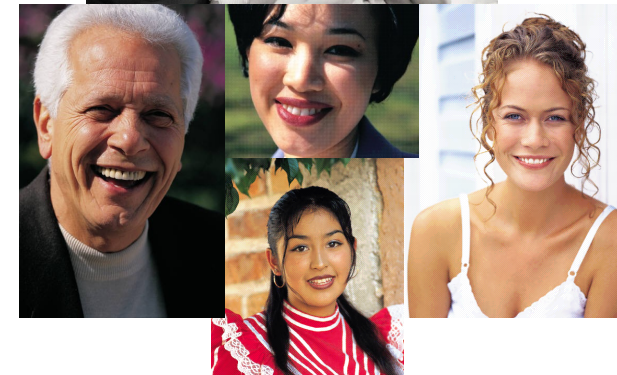
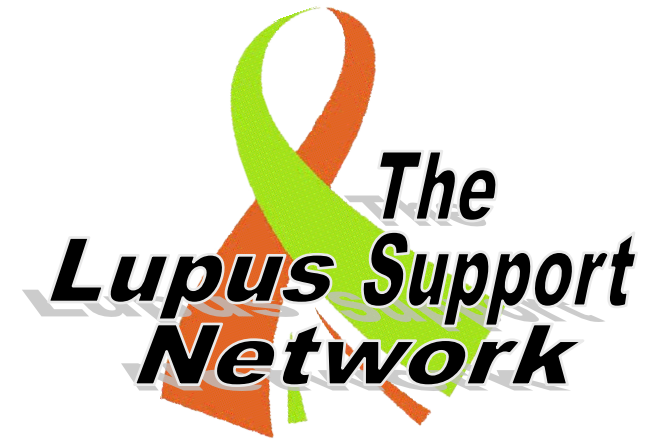


1108 Airport Blvd., Ste. C
P.O. Box 17841
Pensacola, Florida 32522

Phone: (850) 478-8107
Fax: (850) 478-0451

Website: www.lsnflorida.org

Email: questions@thelupussupportnetwork.org
Executive Dir.: wanda@thelupussupportnetwork.org
Admin. Asst.: anna@thelupussupportnetwork.org



P.O. Box 17841
Pensacola, FL 32522-7841

(850) 478-8107

Lupus Facts

Lupus is a chronic inflammatory disease that can affect various parts of the body, especially the skin, joints, blood, and kidneys. The body's immune system normally makes proteins called antibodies to protect the body against viruses, bacteria, and other foreign materials. These foreign materials are called antigens. In an autoimmune disorder such as lupus, the immune system loses its ability to tell the difference between foreign substances (antigens) and its own cells and tissues. The immune system then makes antibodies directed against "self." These antibodies, called "auto-antibodies," react with the "self" antigens to form immune complexes. The immune complexes build up in the tissues and can cause inflammation, injury to tissues, and pain.

More people have lupus than AIDS, sickle-cell anemia, cerebral palsy, multiple sclerosis and cystic fibrosis combined.

African Americans, Latinos, Native Americans and Asians are more likely to have lupus than the general population.

Lupus is 10 to 15 times more likely to strike women than men.

1 out of every 185 Americans has lupus.

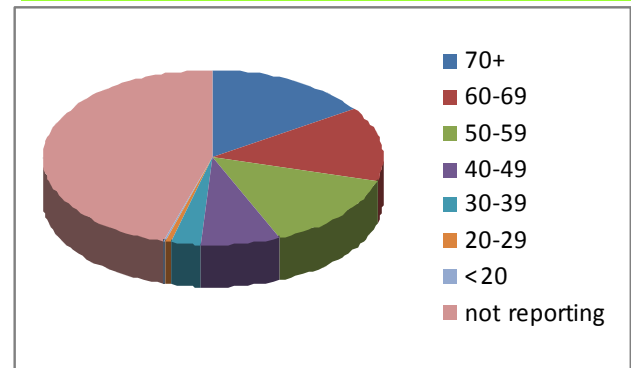
Lupus is not a visible disease and often takes years to diagnose properly.

There is no cure for lupus, but treatment is available.

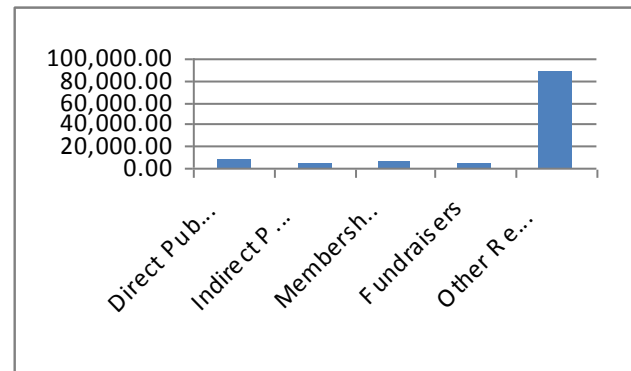


In 1979, a small group of people in the Pensacola area began meeting at Baptist Hospital to talk about how they were affected by lupus and lend support to each other. Within a couple of years, this group had incorporated and obtained 501(c)3, charitable status with the IRS. Another similar group was meeting at the same time in Tallahassee. In the early 90's the two groups merged to form what is today known as the Northwest Florida Lupus Foundation. Since its inception, the Northwest Florida Lupus Foundation has focused its efforts on providing support, assistance and funding to those affected by Lupus. In 2003 the name was changed to Lupus Support Network to better reflect the areas served and the mission of the organization. We offer our services to all lupus patients from Mobile, AL, east to Tallahassee, FL and north to Brewton, AL.

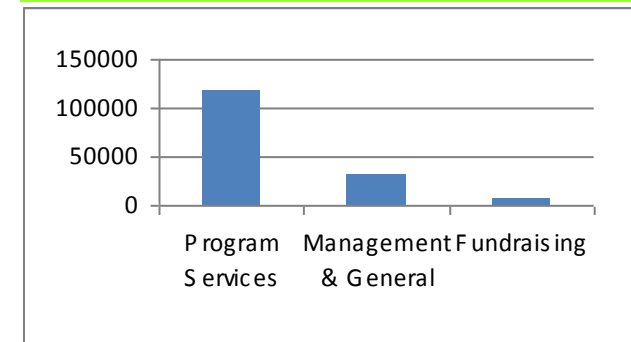
Those We Serve



Where Our Funding Comes From



Our Expenditures (how each dollar is spent)



Membership fees, Donations, Memorials, Grants, CFC Funds, Fundraisers (such as our Golf Tournament, Cell Phone Donation Program, and others.)